



# deep trout designs



## MUD Hat

[Mosaic Ugly Duckling hat]

This Mosaic slip stitch hat was designed as a warm, dense hat for charities that provide warmth to children in some of the coldest regions of the world. Mosaic slip stitch is a wonderful addition for your knitting tool box: it creates a dense, thermal fabric that is slightly textured, and since you knit with only one color at a time, you avoid issues of stranded work while still achieving colorful results. The mosaic chart used in this pattern was designed by the lovely and talented Karin Aida, and made famous in her Ugly Duckling Socks pattern. The chart is simple, yet effective, as the main color (MC) both frames and separates the color(s) in the contrasting yarn, enhancing or tempering the contrasting color (CC), which will transform it into the swan it wants to be.

This pattern has been test knit. Check the pattern pages on [Ravelry.com](http://Ravelry.com) for notes on more MUD Hats.



### Materials —

**Yarn:** One Main Color (MC) and one Contrasting Color (CC) in bulky or worsted weight doubled yarn. For bulky yarn you will need —

MC: 80–95 gr (89–105 yds)

CC: 45 gr (50 yds)

If using worsted doubled, you will need twice this yardage. Variegated or self-striping yarns create the most striking results. The higher the contrast between the MC and CC, the better the rectangular box design is visible. Lamb's Pride Bulky, Wisdom Poems Chunky, Cascade 220 doubled, Paton's Classic Wool doubled, etc. are suitable yarns. The pattern is adaptable to using scraps and mixing yarns (slip stitch patterns accommodate thickness variations).

### Needles:

- 16" circular needles in size 9 or 10, or whatever size achieves gauge
- 16" circular needle one size smaller for ribbing
- DPNs in the larger size

### Gauge —

3.5–4 stitches and 6–7 rows = 1" Mosaic slip stitch pulls in both stitches and rows, so a yarn and needle combination that gets 3.5 spi in stockinette stitch is a great place to start. Swatch for most predictable results.

### Finished Size —

At 4 spi, finished size will be 18" circumference; at 3.5 spi, finished size will be 20". The hat is quite stretchy and will fit a wide range of heads from child to adult.

### Note —

- Slip all stitches purlwise with yarn in back.

# MUD Hat

*old trout designs*

## Knitting directions —

### Brim

With smaller size circular needles and MC, cast on 72 sts. Join, and place marker to mark beginning of round. Knit 2”–2.5” of k2, p2 ribbing (or any stretchy ribbing).

### Body

Switch to the larger size circular needle and knit one row in MC (**important: do not skip this step!**).

Now attach the CC and begin working the Mosaic Ugly Duckling chart or written Stitch Pattern. Two things to remember about mosaic slip stitch are:

- You knit with only one color at a time, for two rows. In this pattern, you alternate between 2 rows using CC (rows 1 & 2), then two rows using MC (rows 3 & 4), and so on.
- Each pair of rows is identical. Row 2 is exactly the same as Row 1, Row 4 is the twin of row 3, Row 6 is as like Row 5 as peas are in a pod, and so on.

### Stitch Pattern

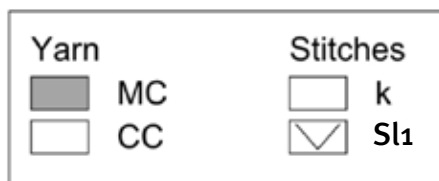
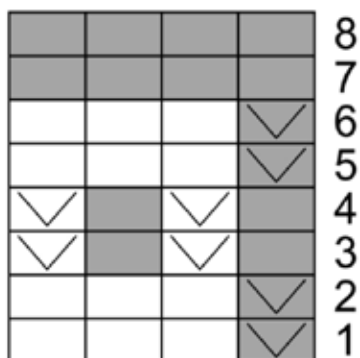
Rounds 1-2 CC: Sl1, k3 around

Rounds 3-4 MC: K1, s1 around

Rounds 5-6 CC: Sl1, k3 around

Rounds 7-8 MC: K around

Beginning with CC, repeat the chart or written Stitch Pattern until you have completed 6” — measured from the beginning of the slip stitch pattern and ending with Row 8 (about 5 chart repeats).



### Crown Decreases

Decreasing happens over the next two repeats of the chart, as follows (change to dpns as needed):

First chart repeat:

Row 1 – 5: as charted

Row 6: Sl1, k1, k2 tog (54 sts.)

Row 7: knit around

Row 8: k1, k2 tog (36 sts.)

Second chart repeat:

Row 1 – 5: as charted

Row 6: Sl1, k1, k2 tog (27 sts.)

Row 7: k1, k2 tog (18 sts.)

Row 8: k2 tog (9 sts.)

### Finishing

Cut yarn, leaving about 10” and thread it through a tapestry needle. Thread through all the stitches on the needles and pull up tight. Weave in all ends. Wear with brim turned up.

### VARIATIONS

- For a worsted weight version, using #5 or #6 needles, cast on 112 stitches, knit 7” before decreasing, and proceed as written.
- To change size up or down for any reason (yarn, needle, or head size), add or subtract in 8-stitch increments (for example up to 80 sts or down to 64 sts) so that the decrease instructions work.
- Offset the boxes every other chart repeat by beginning with the 3rd stitch from the right on the chart.
- Change the MC after Row 7 to begin a set of box frames in another color.
- Change CC yarns at each chart repeat, or randomly, or when scraps run out.