

## Kestrel Bulky

Designed by: Peggy Luensmann



### Sizes

Children's 8-10 (12-14); Finished Chest: 32 (35.5) inches

### Materials

Yarn: Color A: Cascade 128—5 balls in Olive (or ~600 yards bulky yarn)

Color B: Caron Felt-It—2 balls in Green Multi (or ~120 yards bulky yarn)

Color C: Cascade 128—1 ball in Chocolate (or ~40 yards bulky yarn)

Needles: US 9—24-inch circular and dpns

US 10 – 36-inch and 24-inch circular and dpns

US 10.5 – 36-inch and 24-inch circulars

Stitch Markers – use as needed to mark beginnings of rounds

Stitch Holders or scrap yarn

### Gauge

3.5 sts/5.5 rows per inch in stockinette using US 10 needles

3.5 sts/5 rows per inch in fairisle pattern using US 10.5 needles (or whatever size you need to get gauge)

### Notes

W&T = Slip next stitch purlwise; wrap yarn around slipped stitch; slip wrapped stitch back to right needle; turn work; and knit back the other direction

M1= Lift yarn between the last stitch knit and the next stitch; place on the left needle and knit

### Body

Cast on 112 (124) sts using US 9 needles in Color A. Place marker and join being careful not to twist. Slip marker each round throughout pattern.

Work \*K1, P1\* ribbing for 2 inches.

Switch to US 10 needles and continue in stockinette until the body is 13.5 (15) inches.

Set body aside and work sleeves.

### Sleeves

Cast on 28 (32) sts using US 9 needles in Color A. Place marker and join being careful not to twist. [Note: The beginning of the round will eventually become the back left shoulder.]

Work \*K1, P1\* ribbing for 2 inches.

Switch to US 10 needles.

Continuing in stockinette, knit for 1.25 (1.5) inches. On next round, K1, M1, knit to last stitch, M1, K1. Repeat this instruction 5 times more. (40 (44) sts)

Knit even until the sleeve is 15 (16.5) inches.

Place 8 (9) underarm sts on a stitch holder or scrap yarn.

Set first sleeve aside and knit the second.

### Yoke

Using US 10 needles and Color A, join body and sleeves as follows: Place the first 8 (9) body sts on a stitch holder or scrap yarn. Pick up the first sleeve and knit around the live stitches to join it to the body. Continue knitting across the body for 48 (53) sts. Place the next 8 (9) body sts on a stitch holder or scrap yarn. Pick up the second sleeve and knit around the live stitches to join it to the body. Knit remaining body sts (48 (53) sts). 160 (176) sts remain, not including sts on holders.

Switch to US 10.5 needles and work through fairisle chart.

### Neck

When fairisle chart is complete, switch back to US 10 needles and Color A.

Beginning at marker, \*K2tog, K2tog, K1\*. Repeat to end of round. 48 (54) sts

Short row shaping: K 10 (12) sts, W&T; P 40 (42) sts, W&T; K 38 (40) sts, W&T; P 36 (38) sts, W&T; K 34 (36) sts, W&T; P 32 (34) sts, W&T.

Knit around picking up wrapped stitches and knitting them together with the corresponding stitch.

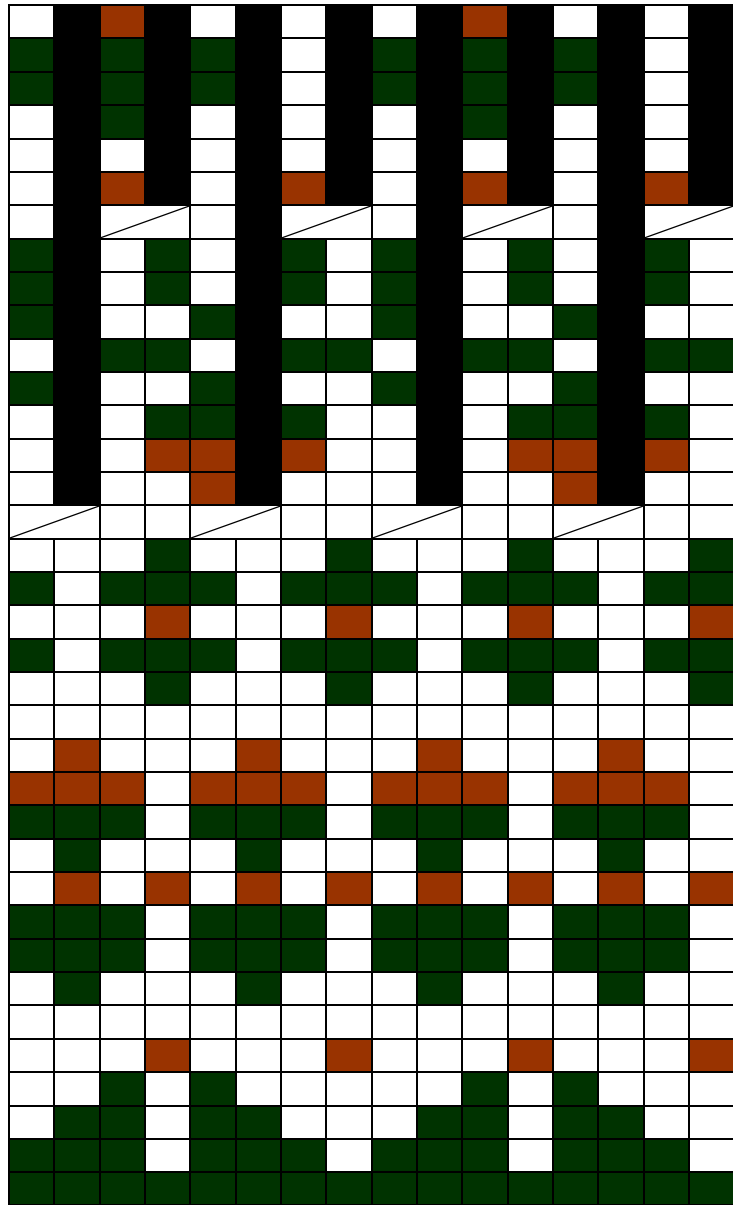
Switch to US 9 needles. Work \*K1, P1\* ribbing for 1 inch for crew neck, 2.5 inches for mock turtleneck, or 5 inches for a turtleneck.

BO loosely.

**Finishing**

Graft underarms using Kitchener stitch.  
Weave in all ends.

**Chart**

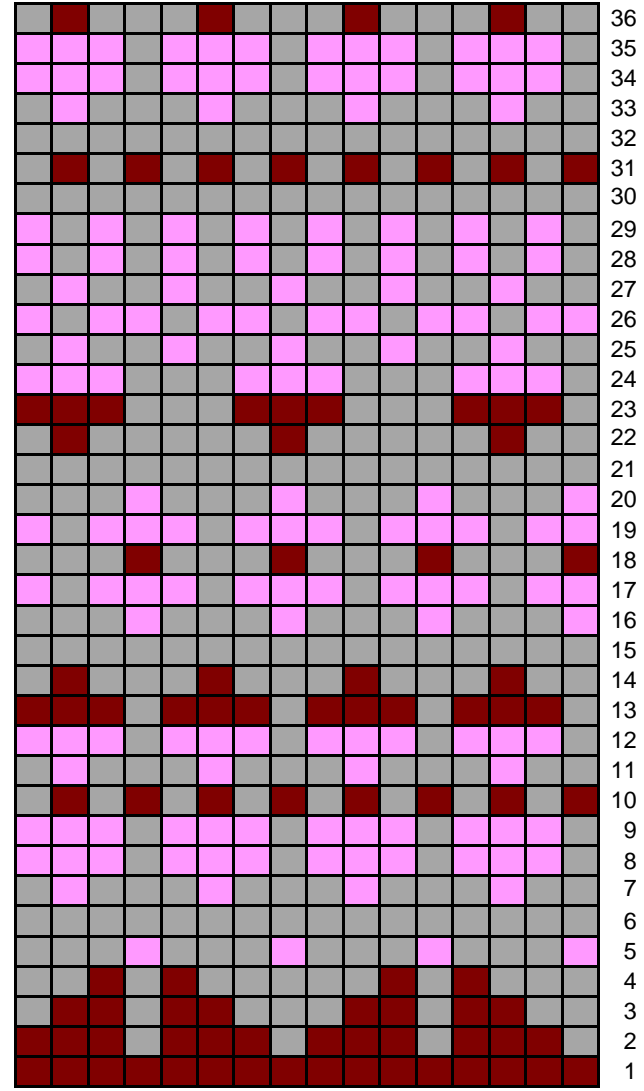
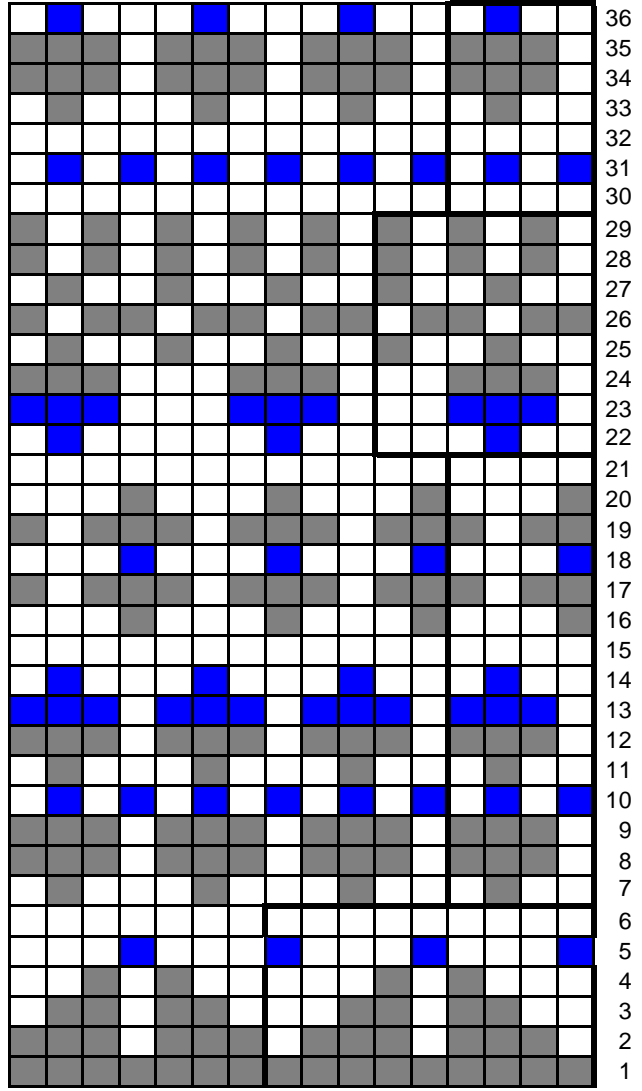
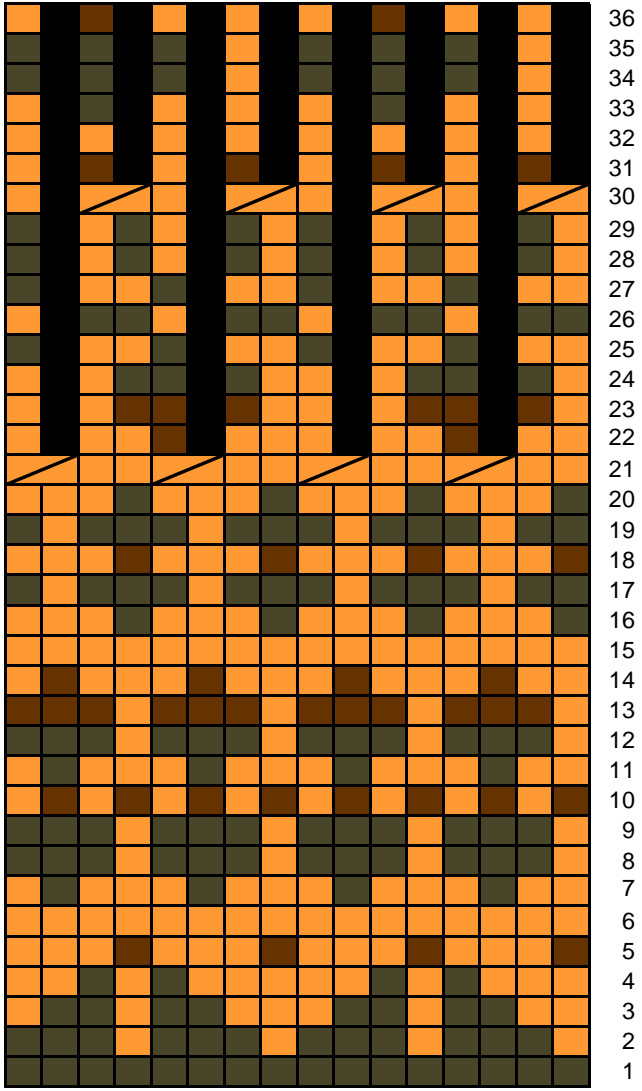


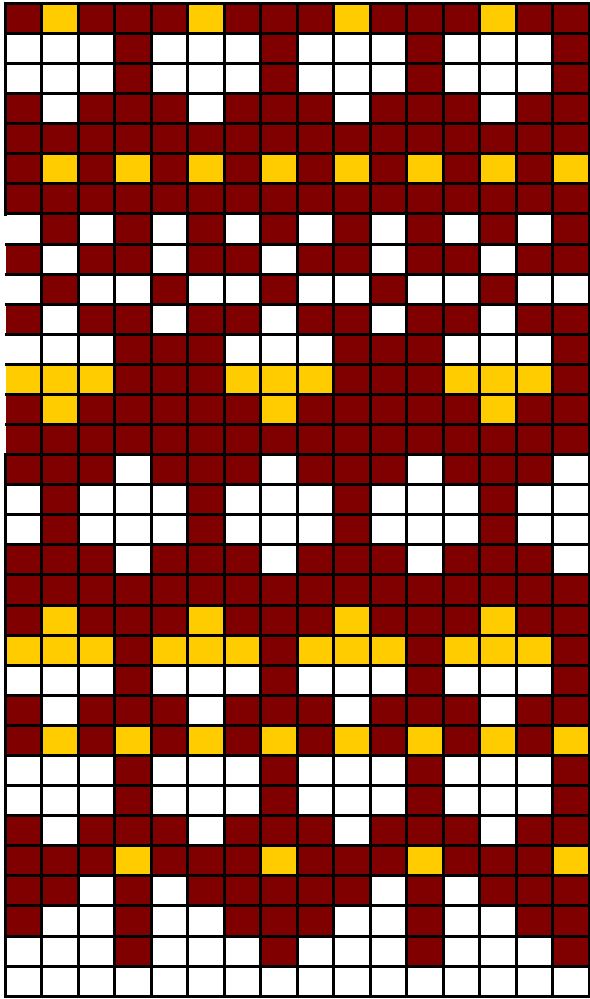
**Note: For the smaller size, eliminate rows 6, 18, and 29.**

Key:  
 no stitch  
 K2tog  
 Color A  
 Color B  
 Color C

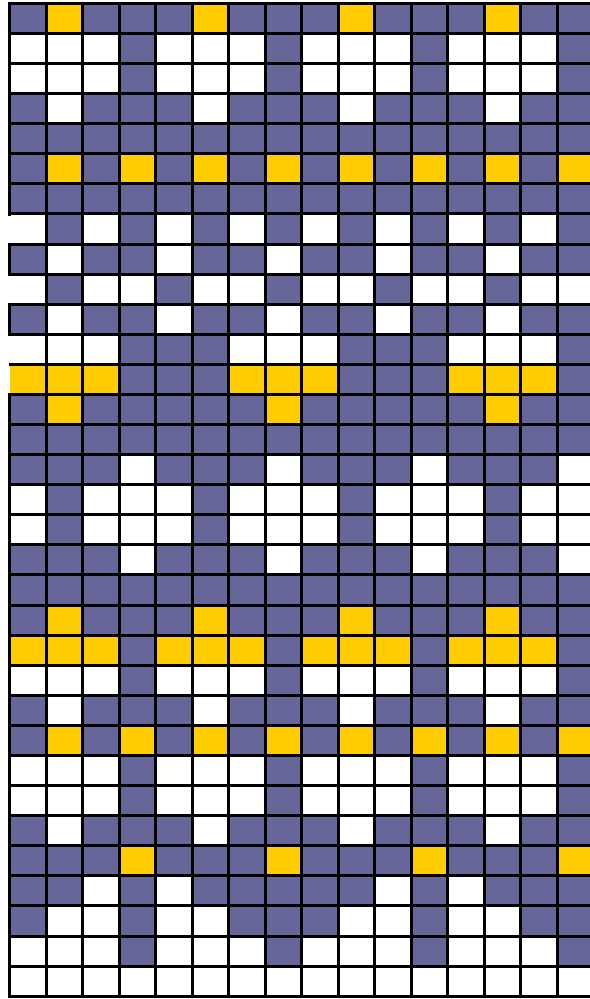
*I like to share my work, so I offer all of my patterns for free.  
Please pay it forward; consider knitting a sweater for charity.*

*Pattern for personal use only; please do not sell this pattern or any garment made from it. Thanks.*

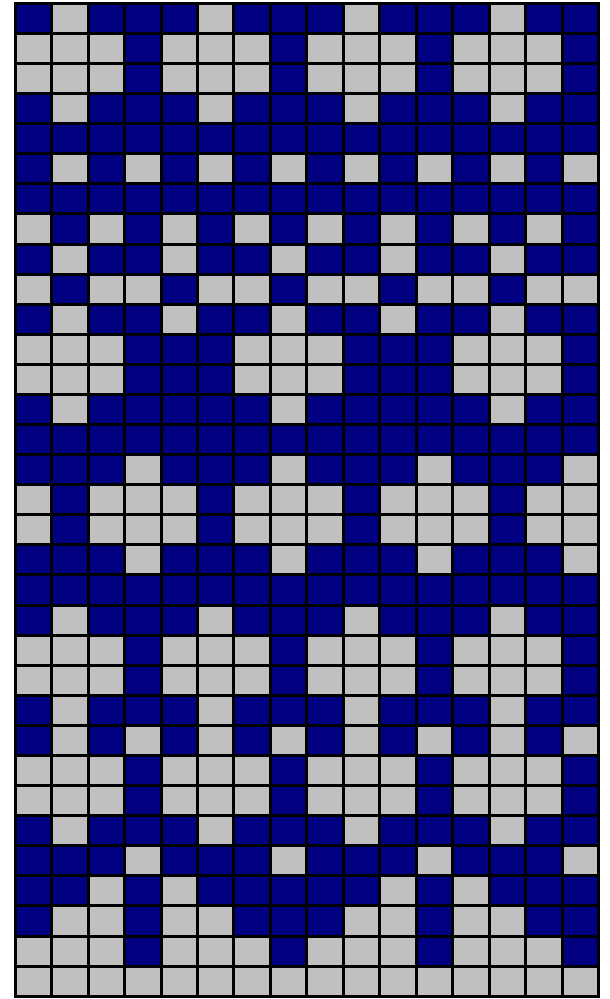




33  
32  
31  
30  
29  
28  
27  
26  
25  
24  
23  
22  
21  
20  
19  
18  
17  
16  
15  
14  
13  
12  
11  
10  
9  
8  
7  
6  
5  
4  
3  
2  
1



33  
32  
31  
30  
29  
28  
27  
26  
25  
24  
23  
22  
21  
20  
19  
18  
17  
16  
15  
14  
13  
12  
11  
10  
9  
8  
7  
6  
5  
4  
3  
2  
1



33  
32  
31  
30  
29  
28  
27  
26  
25  
24  
23  
22  
21  
20  
19  
18  
17  
16  
15  
14  
13  
12  
11  
10  
9  
8  
7  
6  
5  
4  
3  
2  
1