



## Snowman Mittens

Copyright Jean Gifford - July 2008  
Intended for personal and charity use only  
Directions are for free distribution only

Directions are written for children's size small (3-5 years). Directions for size medium (6-8 years) are in parentheses

Worsted weight yarn - 50 (60) grams

Set of double pointed needles to get a gauge of 5-1/2 stitches per inch. Try American size 4 (3.5 mm).

Cable needle or extra double point needle

Waste yarn for marking thumb placement

A small amount of yarn in a contrasting color for adding embroidered detail.

-----  
Cast on 36 (40) stitches, divide over 3 needles and join, being careful not to twist stitches.

Work in your choice of either K2, P2 ribbing **OR** K1, P1 ribbing for 18 (20) rounds.

**Small size only:** Work 6 rounds in stockinette (knit every round).

Distribute stitches so that there are 18 (20) on "needle 1" (these will be the back of the hand) and 9 (10) on each of "needle 2" and "needle 3" (these two needles will be the palm of the hand)

Work 4 (13) rounds, following Chart 1 (Chart 2) on needle 1 (back of hand) and knitting all stitches on needles 2 and 3 (palm of hand)

When you reach Round 5 (14) of the chart, place a marker for the thumb.  
On this round only:

**Right mitten:** Work row 5 (14) of Chart 1 (Chart 2). On needle 2, K1, Knit next 6 (7) stitches with waste yarn, slip these 6 (7) stitches back to left hand needle and re-knit them using mitten yarn. Knit remaining 2 stitches on needle 2. Knit all stitches on needle 3.

**For left mitten,** reverse the thumb placement.

Continue to end of chart, following chart on needle 1 and knitting all stitches on needle 2 and needle 3.

### **Top of Hand**

Decrease round -

Needle 1: Knit 1, slip 1, knit 1, PSSO (pass slipped stitch over the knitted stitch), knit to last 3 stitches on needle, knit 2 together, knit 1.

Needle 2: Knit 1, slip 1, knit 1, PSSO, knit remaining stitches.

Needle 3: knit to last 3 stitches on needle, knit 2 together, knit 1.

(Work one decrease round, work one round even), twice.

Work decrease round three times.

16 (20) stitches remain, with 8 (9) on back of hand, 8 (9) on palm side. Use Kitchener Stitch or a 3-Needle bind-off to graft top of hand together.

### **Thumb:**

Remove the waste yarn and pick up 6 (7) stitches from below the waste yarn and 5 (6) stitches from above. Pick up two stitches at each side of thumb for a total of 15 (17) stitches. Divide these 15 (17) stitches over 3 needles.

Knit 11 (13) rounds

1st decrease round: (Knit 2 together, knit 1) 5 times.

(Medium size: end with Knit 2 together). 10 (11) stitches remain

Knit 1 round even.

2nd decrease round: (Knit 2 together) 5 times.

(Medium size: end with Knit 1)

Cut yarn and draw yarn through remaining 5 stitches, pull tight.

Weave in yarn ends.

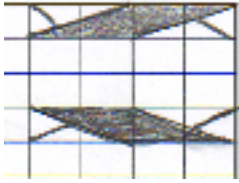
Use a contrast color yarn to embroider eyes, mouth, buttons on your snowman. Or, sew on small buttons or beads or attach bits of felt with a washable fabric glue.



Knit on right side



Purl on right side



Cable 4 right:

Place 2 stitches on cable needle, hold to back of work.

Knit next 2 stitches from left needle,

Knit 2 stitches from cable needle.

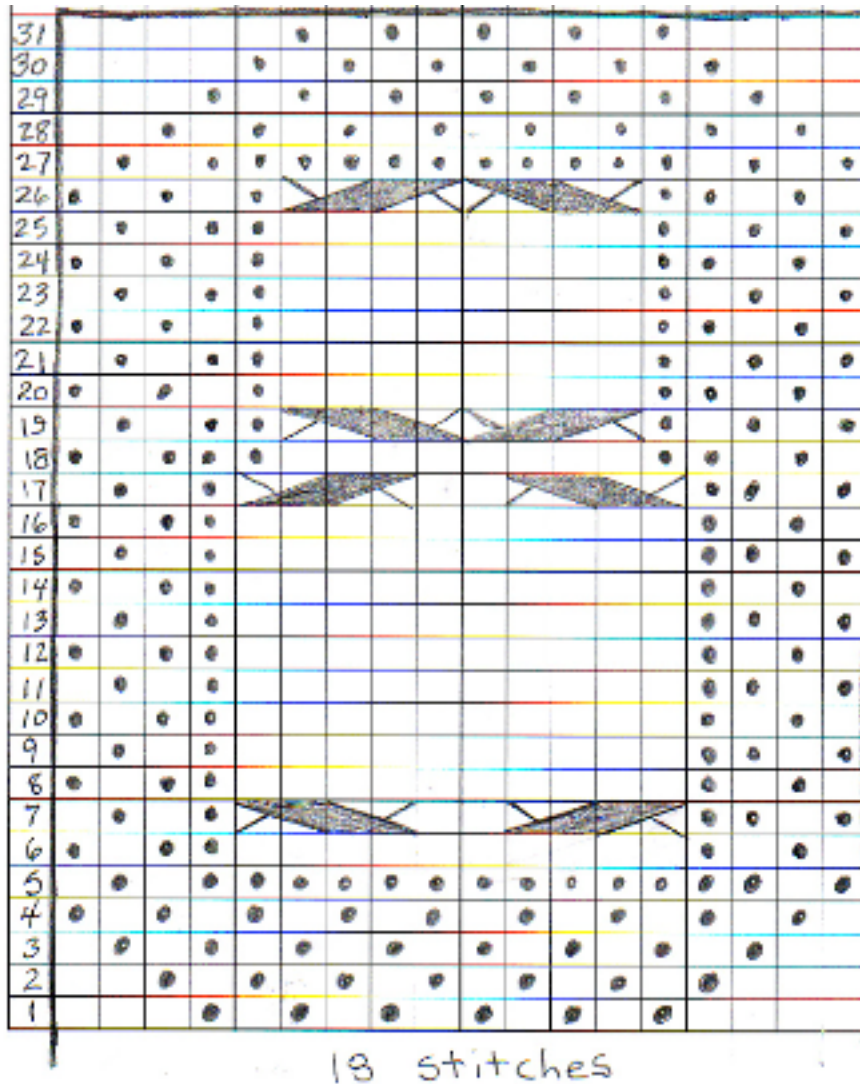
Cable 4 left:

Place 2 stitches on cable needle, hold to front of work.

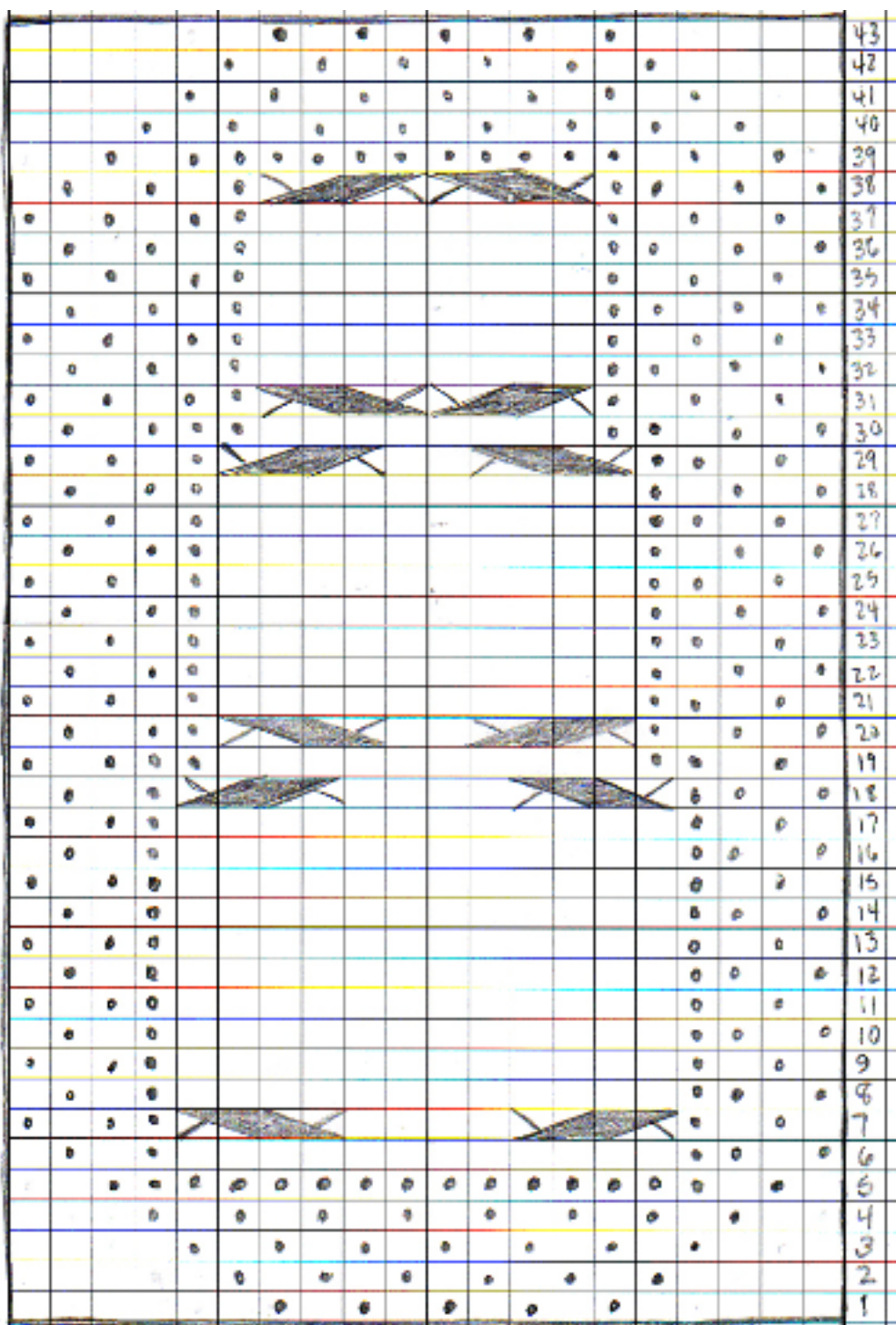
Knit next 2 stitches from left needle,

Knit 2 stitches from cable needle.

### Chart 1 - Small Mittens



### Chart 2 - Medium Mittens



20 stitches